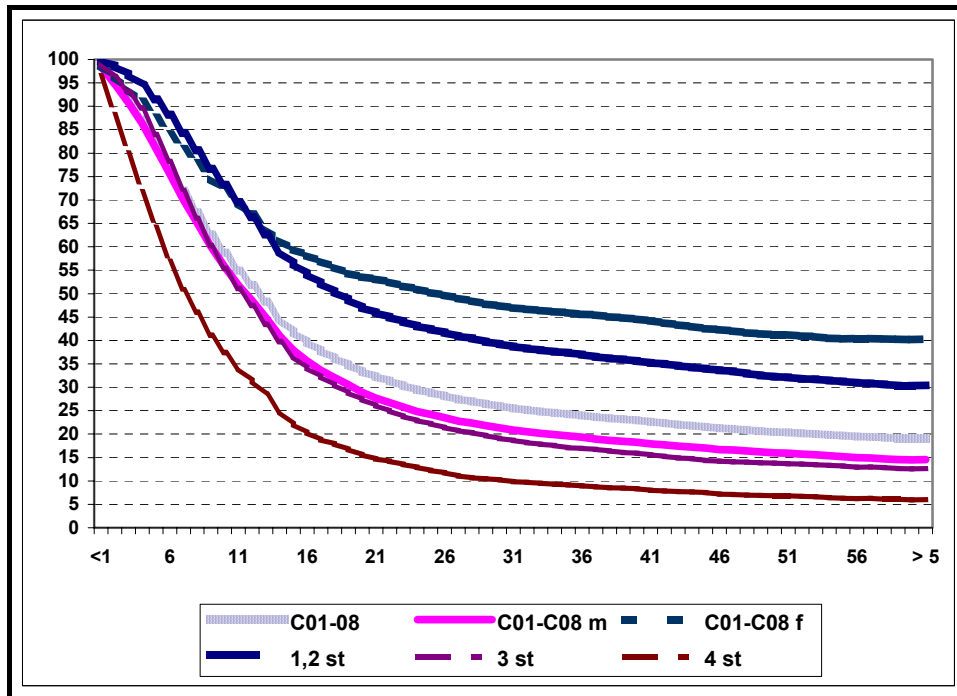
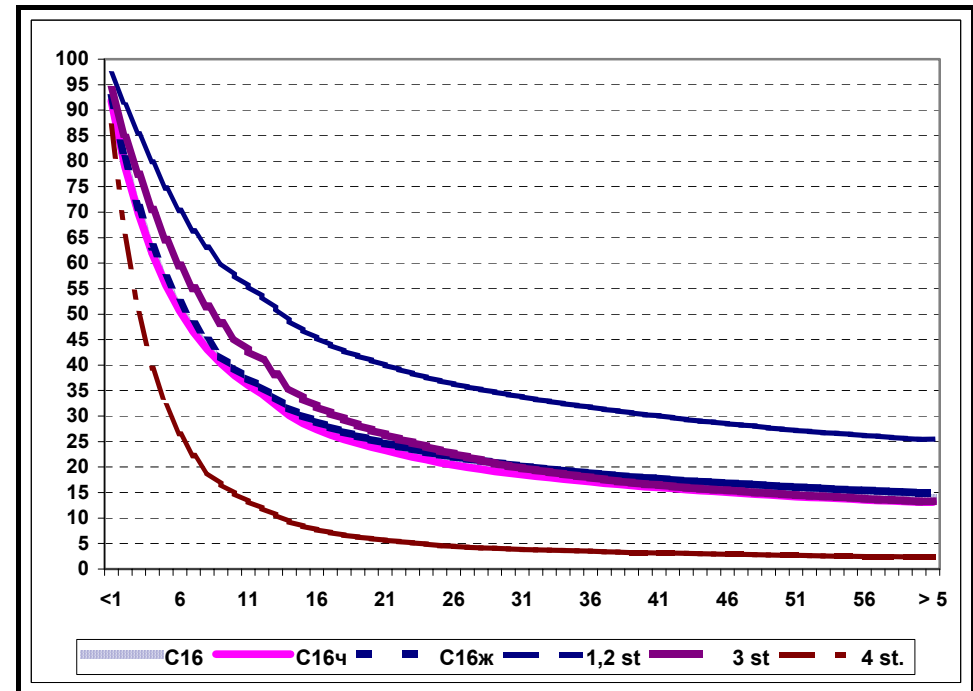


ORAL CAVITY (C01-C08)



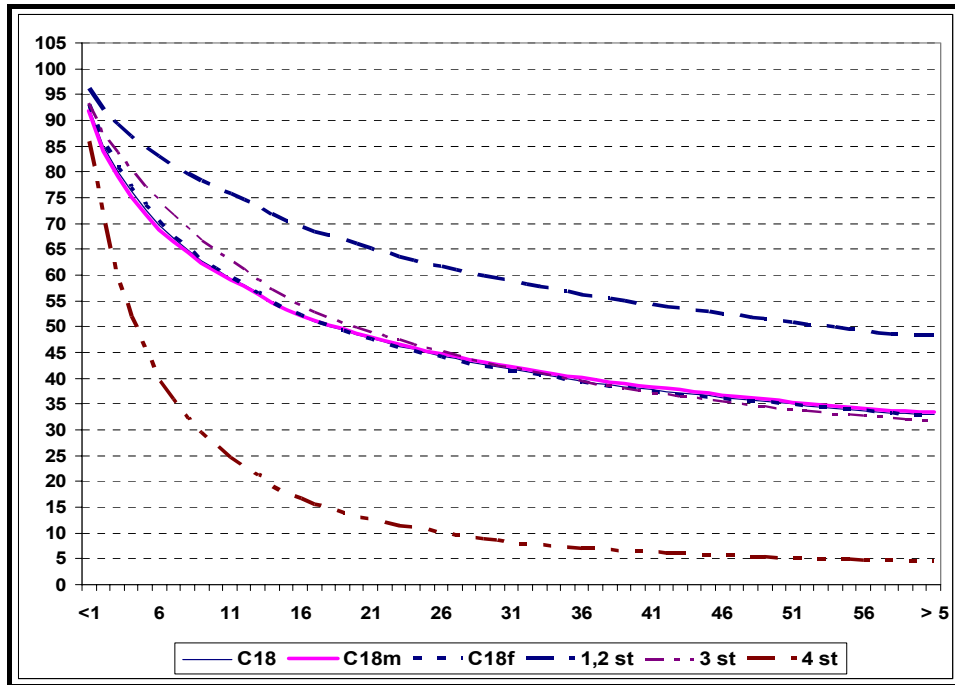
STOMACH (C16)



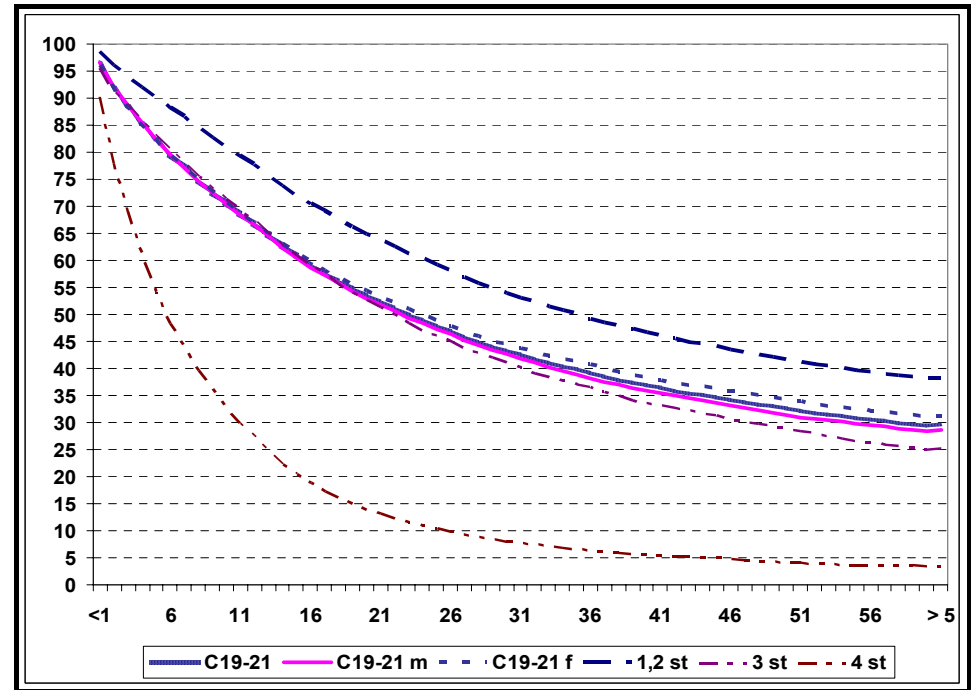
C01-C08	number of patients	Survival rate (%)				
		12 months	24 months	36 months	48 months	60 months
All	14912	51,8	29,5	24,0	20,9	19,0
males	12138	48,5	24,8	19,3	16,4	14,5
females	2774	66,9	51,0	45,6	41,6	40,2
1-2 stage	6048	66,3	43,1	37,0	33,0	30,3
3 stage	4818	47,5	22,9	16,9	14,0	12,6
4 stage	3498	31,4	12,9	9,0	7,0	6,0

C16	number of patients	Survival rate (%)				
		12 months	24 months	36 months	48 months	60 months
All	80128	34,9	22,1	17,8	15,4	13,8
males	47969	34,3	21,5	17,2	14,7	13,1
females	32159	35,8	23,0	18,8	16,6	15,0
1-2 stage	29654	53,5	37,6	31,8	28,0	25,4
3 stage	19385	40,9	24,0	18,0	15,0	13,2
4 stage	27467	11,9	4,9	3,5	2,8	2,4

COLON (C18)



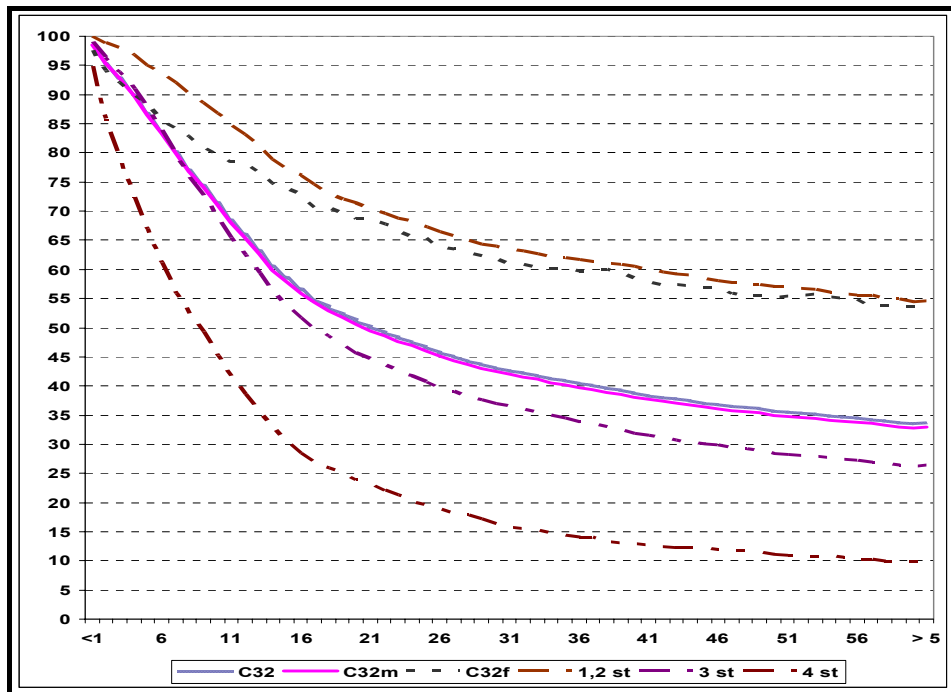
RECTUM, ANUS (C19-C21)



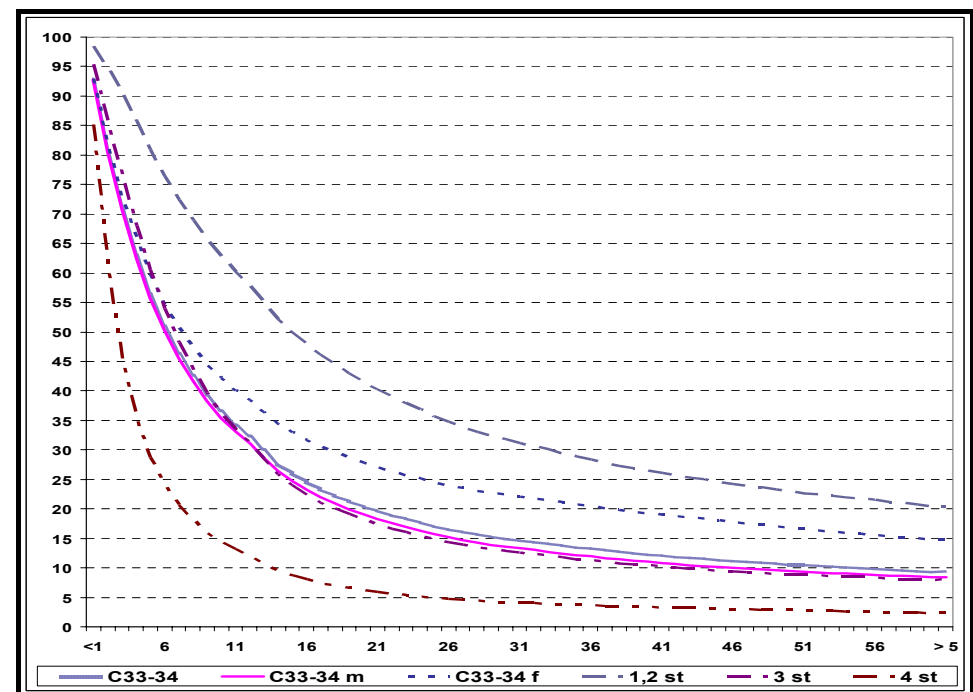
C18	number of patients	Survival rate (%)				
		12 months	24 months	36 months	48 months	60 months
All	53942	58,0	45,6	39,5	35,8	33,0
males	24749	58,0	45,9	40,1	36,2	33,4
females	29193	58,1	45,3	39,1	35,5	32,9
1-2 stage	27312	74,6	62,8	56,2	51,7	48,2
3 stage	12328	61,2	46,6	39,4	34,8	31,8
4 stage	12017	23,0	11,1	7,0	5,3	4,4

C19-C21	number of patients	Survival rate (%)				
		12 months	24 months	36 months	48 months	60 months
All	50439	58,9	48,6	42,1	36,4	31,1
males	26219	59,9	48,6	41,6	35,7	30,5
females	24220	57,8	48,6	42,6	37,2	31,8
1-2 stage	33020	77,4	64,4	55,9	47,1	39,5
3 stage	7855	53,3	40,6	30,8	19,8	11,8
4 stage	8314	30,9	20,2	17,7	7,3	3,7

LARYNX (C32)



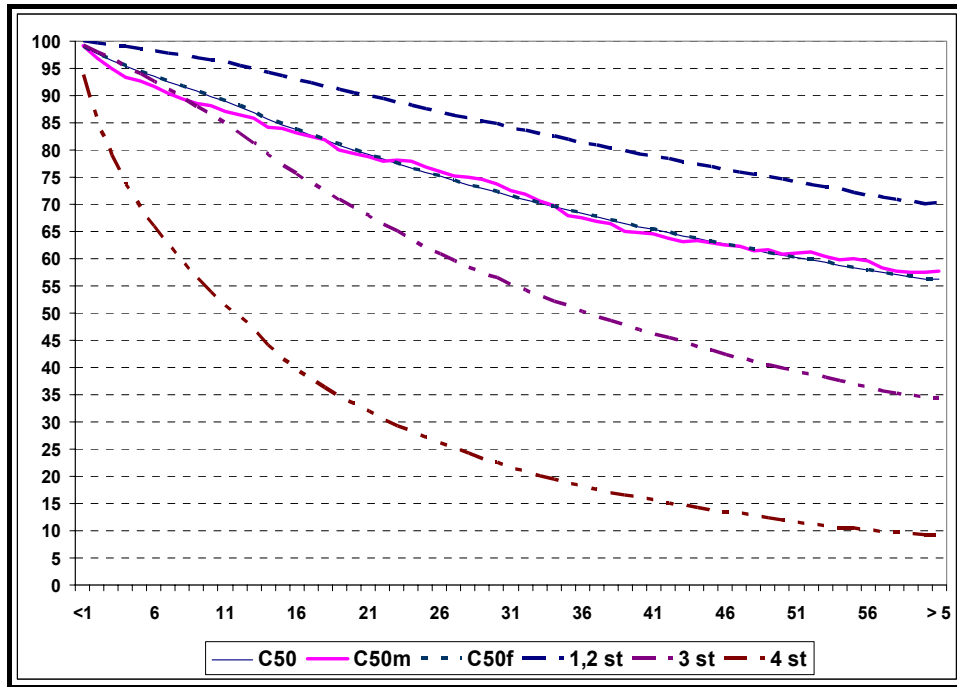
TRACHEA, BRONCHUS AND LUNG (C33-C34)



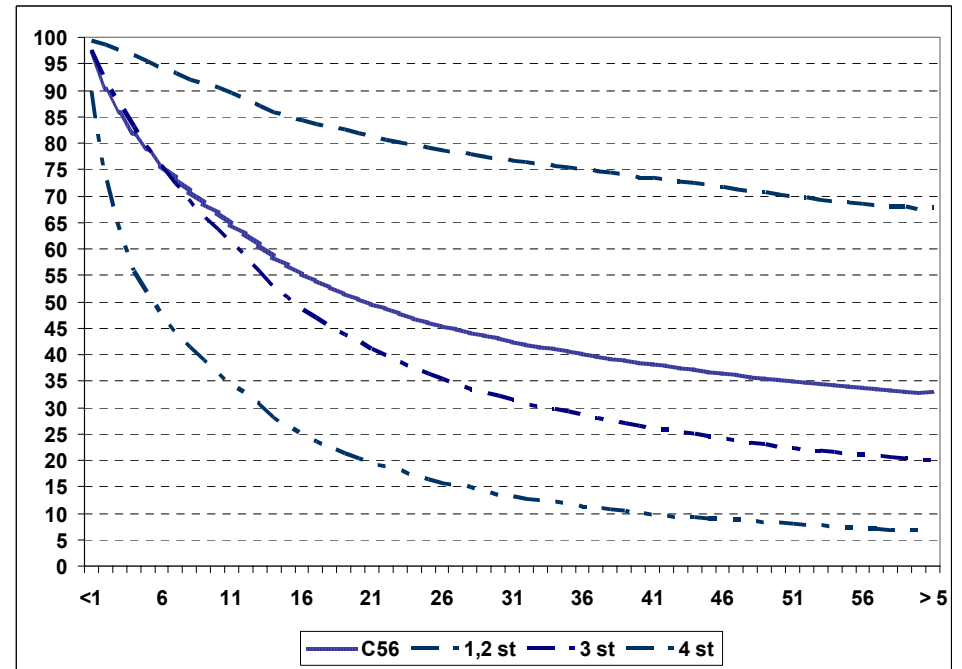
C32	number of patients	Survival rate (%)				
		12 months	24 months	36 months	48 months	60 mic
All	15954	66,0	47,6	40,5	36,4	33,6
males	15302	65,5	46,9	39,7	35,6	32,8
females	652	78,3	65,5	59,6	55,5	53,6
1-2 stage	5600	83,3	68,1	61,5	57,5	54,4
3 stage	7815	62,5	41,7	33,8	29,2	26,2
4 stage	2212	38,5	20,1	14,1	11,7	9,9

C33-C34	number of patients	Survival rate (%)				
		12 months	24 months	36 months	48 months	60 months
All	115814	32,3	17,7	13,3	10,9	9,4
males	96663	31,1	16,3	12,0	9,7	8,4
females	19151	38,4	25,0	20,4	17,3	14,8
1-2 stage	27514	57,8	36,8	28,4	23,6	20,4
3 stage	54094	31,3	15,4	11,2	9,1	7,9
4 stage	29161	12,0	5,1	3,7	2,9	2,3

BREAST (C50)



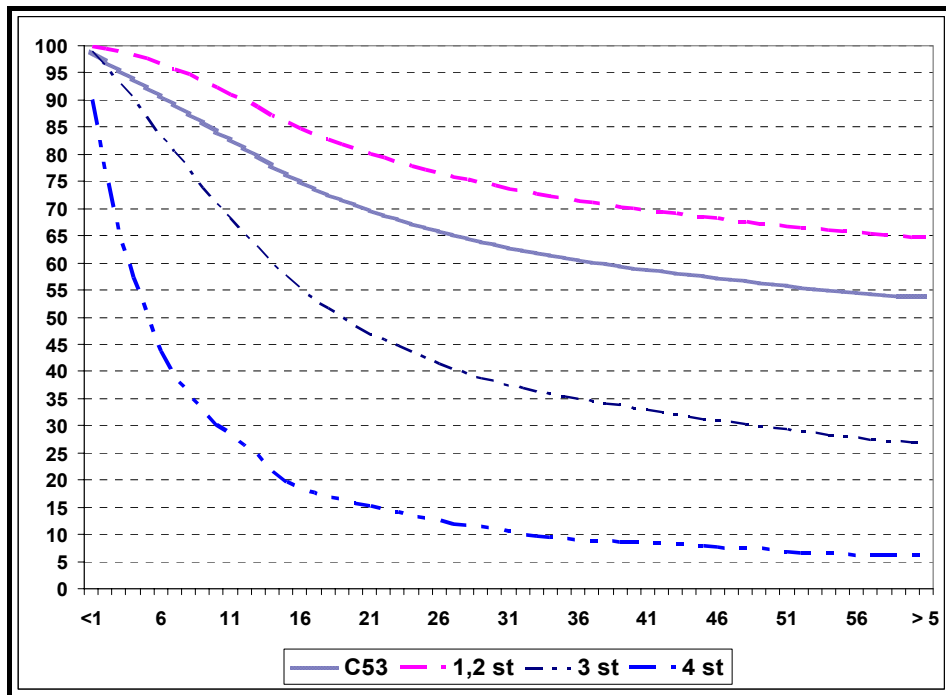
OVARY (C56)



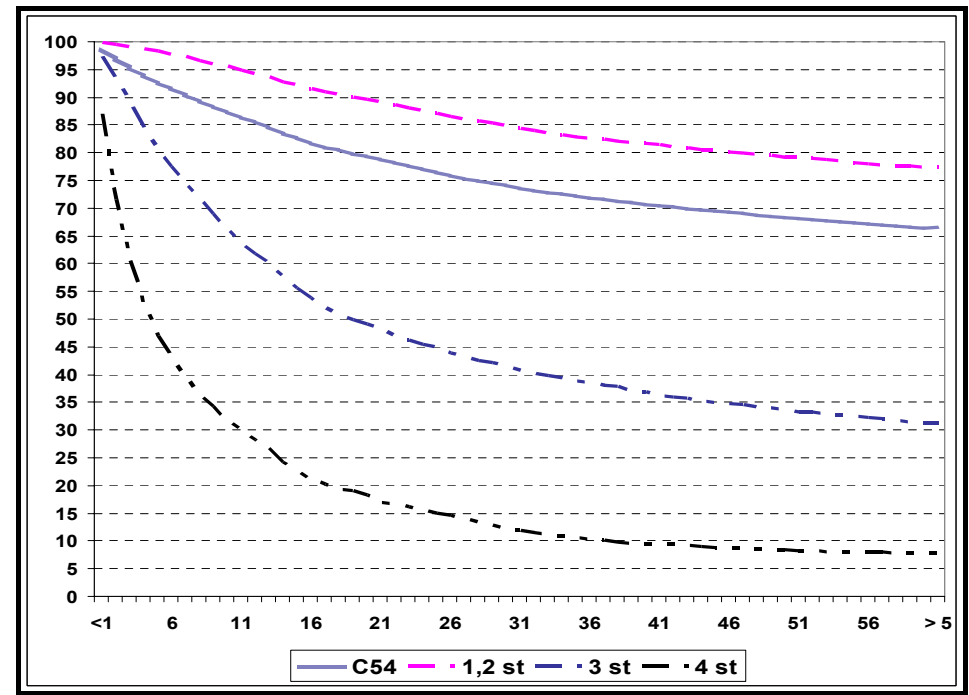
C50	number of patients	Survival rate (%)				
		12 months	24 months	36 months	48 months	60 months
All	93831	88,0	76,7	68,2	61,6	56,2
males	792	86,5	77,8	67,5	61,5	57,5
females	93039	88,0	76,7	68,2	61,6	56,2
1-2 stage	64584	95,5	88,1	81,4	75,4	70,1
3 stage	18656	83,1	63,5	50,2	41,0	34,3
4 stage	8943	49,5	28,1	18,1	12,7	9,1

C56	number of patients	Survival rate (%)				
		12 months	24 months	36 months	48 months	60 months
All	23701	63,0	47,0	40,3	35,9	32,9
1-2 stage	7807	88,1	79,6	75,0	70,7	67,5
3 stage	10453	59,0	37,3	28,5	23,2	20,0
4 stage	4463	32,7	17,1	11,2	8,5	6,6

CERVIX UTERI (C53)



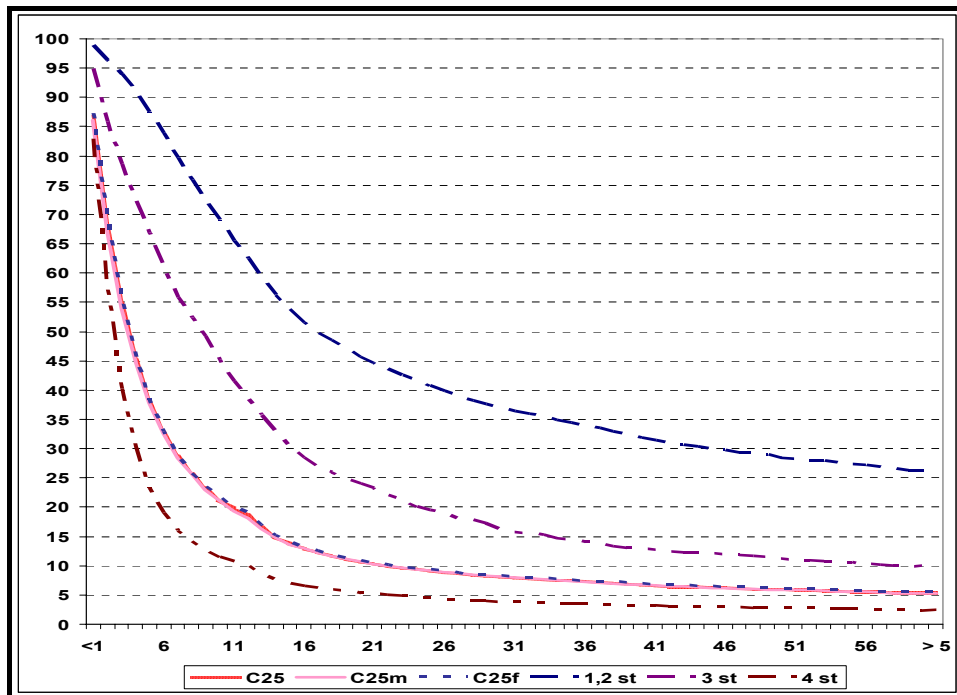
CORPUS UTERI (C54)



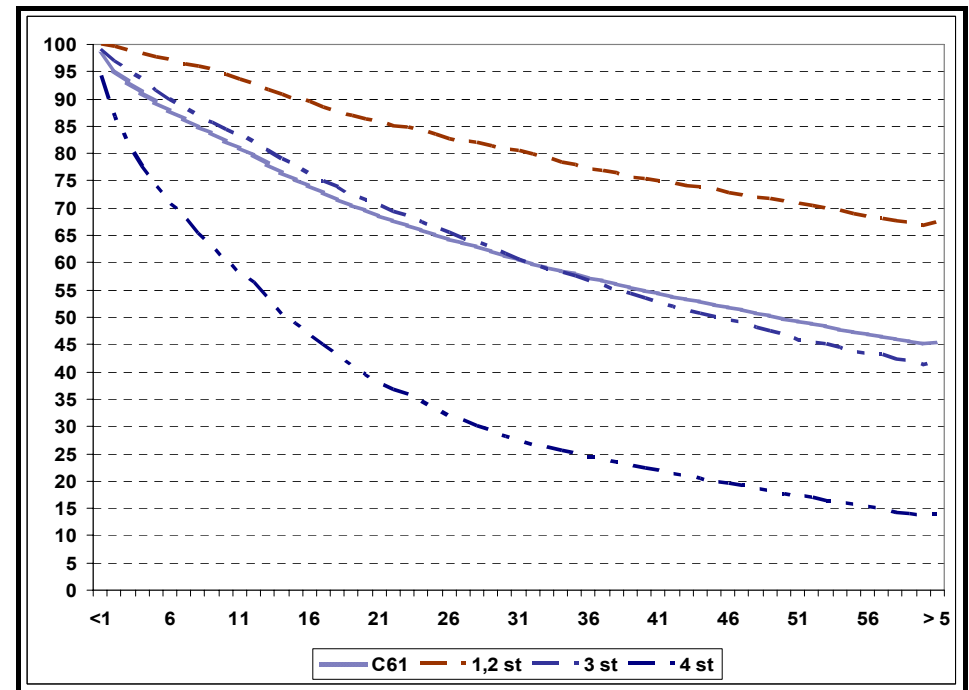
C53	number of patients	Survival rate (%)				
		12 months	24 months	36 months	48 months	60 months
All	28970	81,4	67,3	60,6	56,7	53,8
1-2 stage	21671	89,9	77,8	71,3	67,5	64,6
3 stage	5259	65,5	43,7	35,0	30,4	27,0
4 stage	1598	26,4	13,3	8,9	7,4	6,0

C54	number of patients	Survival rate x (%)				
		12 months	24 months	36 months	48 months	60 months
All	36559	85,6	77,1	71,9	68,9	66,5
1-2 stage	28487	94,2	87,5	82,5	79,7	77,3
3 stage	3847	61,8	45,4	38,4	34,1	31,2
4 stage	1702	28,3	15,5	10,2	8,5	7,7

PANCREAS GLAND (C25)



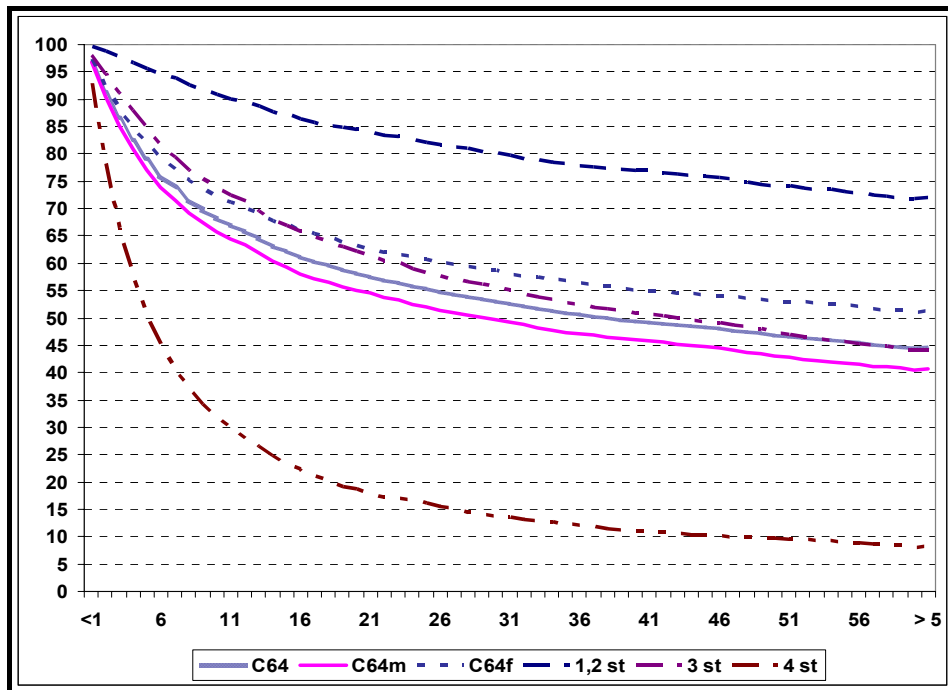
PROSTATE GLAND (C61)



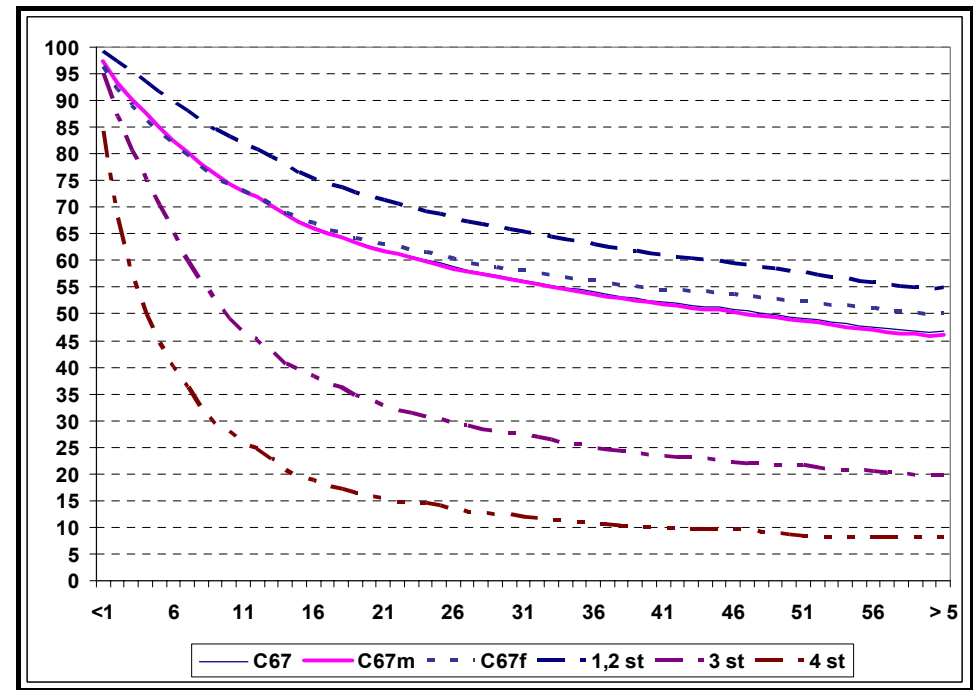
C25	number of patients	Survival rate (%)				
		12 months	24 months	36 months	48 months	60 months
All	27545	18,5	9,5	7,3	6,1	5,4
males	15002	18,1	9,4	7,3	6,0	5,3
females	12543	19,0	9,5	7,4	6,2	5,5
1-2 stage	7448	62,5	41,7	33,8	29,2	26,2
3 stage	7815	38,5	20,1	14,1	11,7	9,9
4 stage	10691	10,1	4,6	3,4	2,8	2,3

C61	number of patients	Survival rate (%)				
		12 months	24 months	36 mic	48 mic	60 mic
All	31289	79,9	66,2	57,4	50,9	45,2
1-2 stage	13342	92,7	84,1	77,3	71,9	66,8
3 stage	9917	82,1	67,4	56,7	48,1	41,3
4 stage	6920	56,4	34,5	24,3	18,7	13,8

KIDNEY (C64)



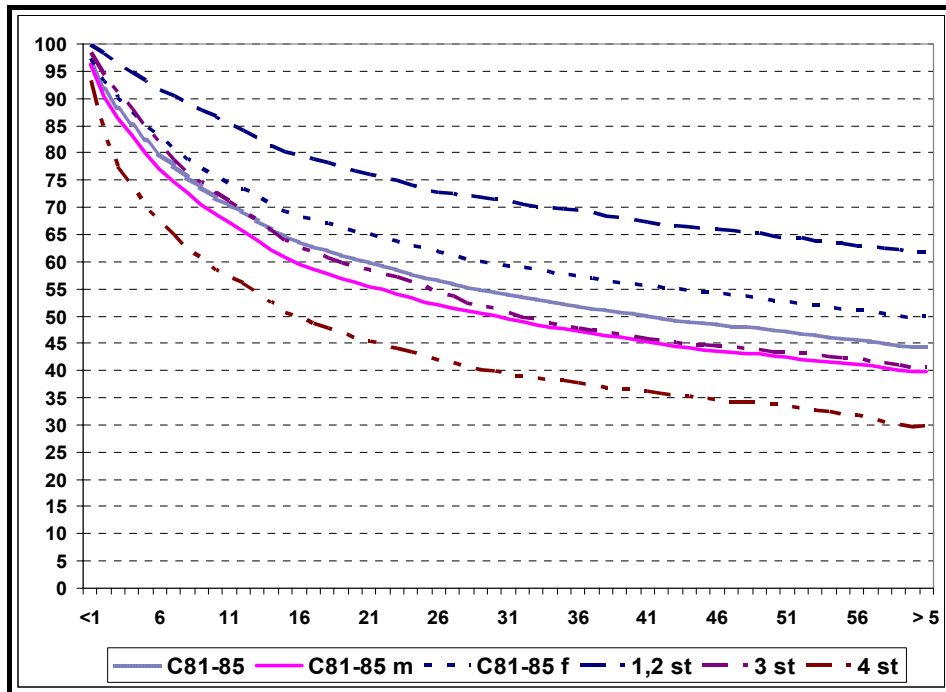
BLADDER (C67)



C64	number of patients	Survival rate (%)				
		12 months	24 months	36 months	48 months	60 months
All	25443	65,9	55,9	50,7	47,5	44,6
males	15312	63,3	52,6	47,1	43,7	40,5
females	10131	70,0	61,1	56,2	53,6	51,1
1-2 stage	10256	89,3	82,5	77,8	74,8	71,8
3 stage	7694	71,3	58,9	52,3	48,2	44,1
4 stage	6540	28,1	16,4	11,9	9,9	8,0

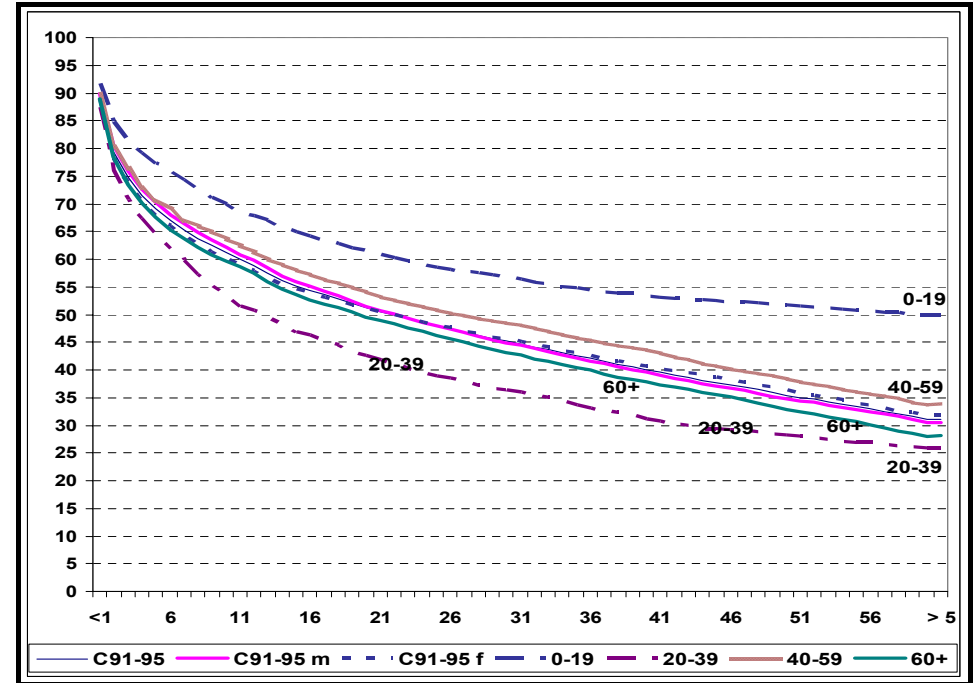
C67	number of patients	Survival rate (%)				
		12 months	24 months	36 months	48 months	60 months
All	28914	71,9	60,1	54,0	50,2	46,5
males	23927	71,9	59,8	53,6	49,7	46,0
females	4987	71,9	61,6	56,3	53,1	49,9
1-2 stage	23239	80,8	69,2	62,9	58,8	54,6
3 stage	2343	45,2	30,6	25,0	21,8	19,6
4 stage	2551	24,7	14,4	10,6	9,1	8,1

LYMPHOMA (C81-C85)



C81-C85	number of patients	Survival rate (%)				
		12 months	24 months	36 months	48 mic	60 mic
All	18391	69,3	57,8	51,9	48,1	44,4
males	9674	65,7	53,3	47,2	43,2	39,7
females	8717	73,3	62,9	57,2	53,6	49,8
1-2 stage	3607	84,0	74,0	69,5	65,3	61,7
3 stage	2119	69,4	56,2	47,8	43,9	40,5
4 stage	1507	56,1	43,3	37,6	34,1	29,6

LEUKEMIA (C91-C95)



C91-C95	number of patients	Survival rate (%)				
		12 months	24 months	36 months	48 months	60 months
All	22493	58,9	48,6	42,1	36,4	31,1
males	12015	59,9	48,6	41,6	35,7	30,5
females	10479	57,8	48,6	42,6	37,2	31,8
(0-19) age group	2374	67,7	59,0	54,3	52,0	49,9
(20-39) age group	1885	50,7	39,4	33,1	28,8	25,9
(40-59) age group	5676	61,2	51,2	45,2	39,2	33,7
(60+) age group	12556	57,5	47,1	40,0	34,0	28,0